

What you need

- 1 x TopBrewer brush with long handle
 - 1 x TopBrewer little brush for milkfoamer
 - 1 x TopBrewer cleaning tablet
- 1 x Bowl with clean, warm water and two clean cloths one damp and one dry.



Open the door on the TopBrewer, and let the top-piston move up until it is in level with the surface. Now switch off the TopBrewer by pressing the on/off button behind the door in the top left corner



Remove the milkfoamer by turning the metalhead counterclockwise. Push it down and off. Unscrew the white milkfoamer head. Clean it in warm water, and use a little brush to remove milk residue. Clean and re-mount.



Pull the scraper out and remove coffee residue; Brush the top of the brew unit using the brush with the long handle.



Wipe thoroughly beneath the top-piston, so that the metal filter, o-ring and the area around is clean. This prolongs the brewers lifetime.



Wipe the top-plate with a damp cloth, pay special attention to the metal grate on the bottom piston. Wipe the underside and inside of the scraper. Check the stainless steel bottom-piston head is clean and without coffee residue. Push the scraper back in place.



Take out the dregbin, and empty the coffeegroundbag. Clean and wipe the bin before replacing the bag. Remember the machine resets the counter each time the bin is removed. Therefore it should always be emptied if taken out.



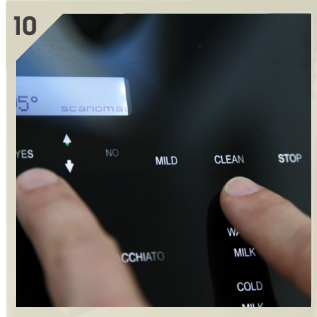
Place a cleaning tablet in the scraper. Close the door to the brew chamber.



Open the fridge, and remove the milkcarton/-bottle. Place the milklines into a empty cup. Switch the TopBrewer on again.



Lower the TopBrewer faucet to the lowest position.



Hold both the "CLEAN"-button and the "YES"-button down simultaneously - the display shows "CLEAN". Let go of the buttons and the process begins. The automatic cleaning process takes approx. 1 minute. Once done the display will show "FINISHED".



Open the fridge, and remove the cup which has collected the dirty-water. Wipe the inside of the fridge with a damp cloth. Put fresh milk into the fridge (1 milk line per bottle/container. NB: All milk bottles/containers should contain same quantity of milk)



Remove the lid from the bean canister and wipe it before refilling with fresh beans. This ensures the best coffee taste. We suggest only to fill what you use in one day. The coffee beans are best stored in a cool and closed bag.

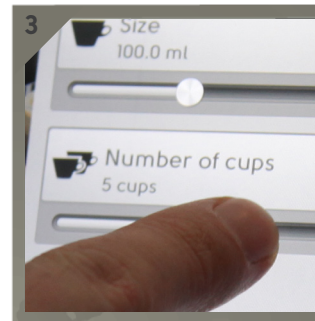
Mælke rengøring



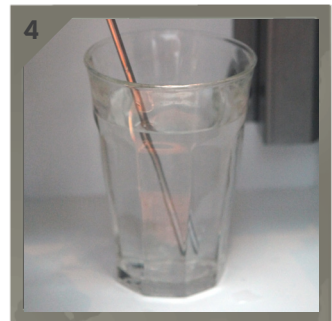
Add a cleaning tablet 500 ml / 17 oz warm water and let it dissolve for a couple of minutes. Place the tube or the milkspear into the glass.



On your iPad or Android device, select "Customize" beneath the "Warm Milk" drink icon.



Slide the number of cups up to 5 and select "Start now". The machine will run the cleaning liquid through the system and clean the milk foamer.



Fill the glass with cold clean water and place the milk spear into the glass. Repeat step 2 and 3. Once done, put the milk back and the machine is ready to use.